

Keeping Our Cool

Achieving Long-term Resilience in the Santa Ana Watershed

Garry Brown, Founder and President

Orange County Coastkeeper and Inland Empire Waterkeeper






All people have the inalienable right to clean water.

Coastkeeper promotes and restores water resources that are drinkable, fishable, swimmable, and sustainable.



A 25-Year Water Resilience Plan for Southern California

**Currently, there doesn't seem to be a realistic,
long-term plan for water resilience.**

An aerial photograph showing a large dam structure across a river, with a reservoir behind it. The surrounding landscape is arid and hilly, with some irrigation canals visible. The text is overlaid on the center of the image.

With respect for MWD and the legacy of imported water, sole-purpose providers might not be the best source for outside-the-box alternatives.

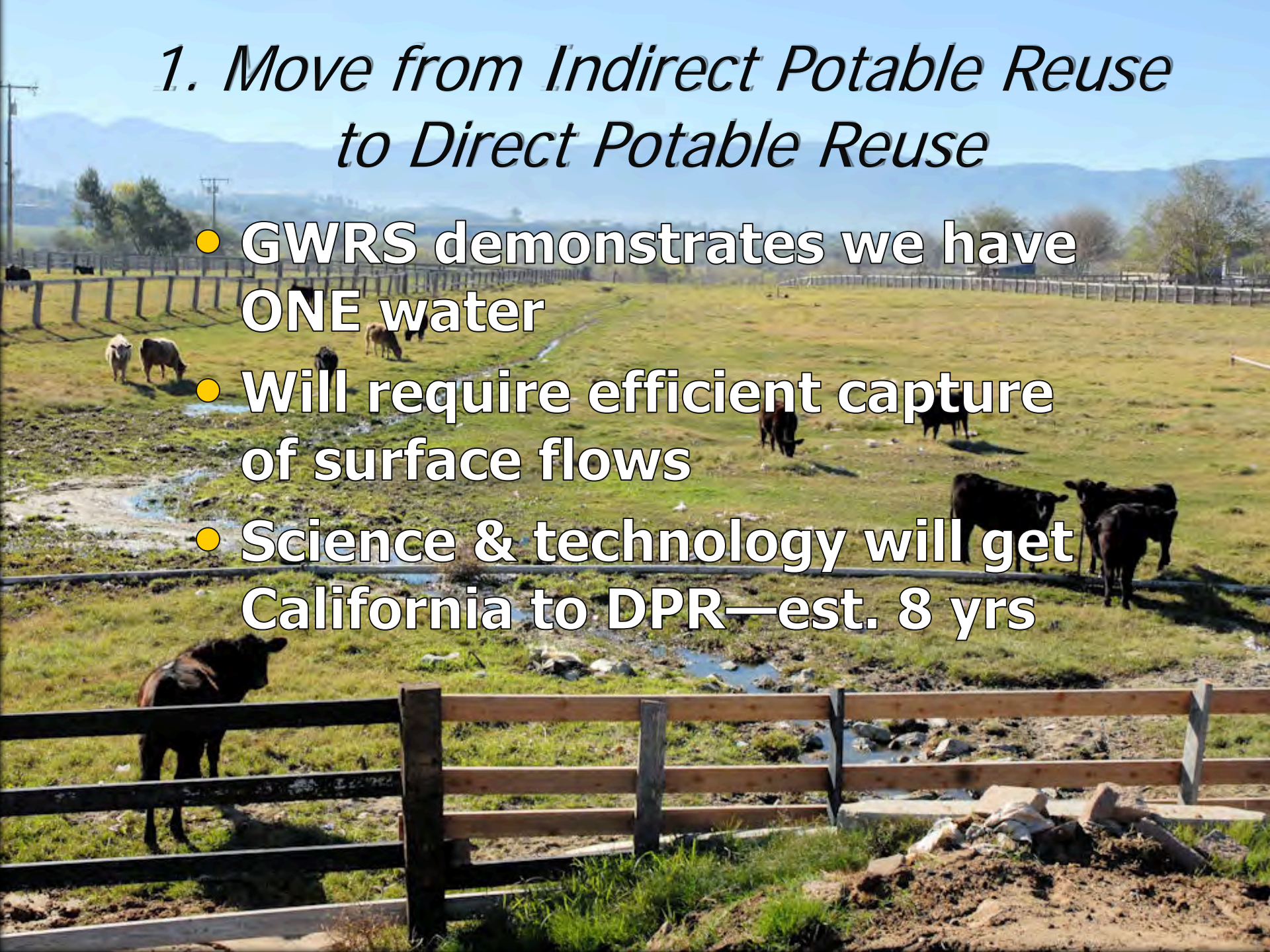


A 25-Year Water Resilience Plan must:

- **1. Move from indirect potable reuse to direct potable reuse**
- **2. Restore contaminated aquifers**
- **3. Get serious about transitioning residential and commercial landscapes**
- **4. Design and build efficient and flexible water transfer systems**

1. Move from Indirect Potable Reuse to Direct Potable Reuse

- **GWRS demonstrates we have ONE water**
- **Will require efficient capture of surface flows**
- **Science & technology will get California to DPR—est. 8 yrs**



2. Restore Contaminated Aquifers

Aggressively restore contaminated aquifers with robust funding



A photograph of a garden scene. In the foreground, there are various green plants and a large bush with light-colored flowers. In the middle ground, a wooden pergola structure is visible, with purple flowers in front of it. In the background, there are trees and a chain-link fence. The text is overlaid on the image.

3. Get Serious About Transitioning Residential & Commercial Landscapes

A photograph of a residential garden. In the foreground, a path made of smooth, rounded stones leads through a bed of dark mulch. The garden is filled with various plants, including clumps of blue-green grasses, purple flowers, and red-flowered plants. In the background, a house with a light-colored exterior and a white door is visible. A white rocking chair sits on a small porch to the left. A stone wall or planter box is visible to the right of the door. The overall scene is a well-maintained and diverse garden.

**Aggressively incentivize and assist in
landscape transition**

**Provide guidance for the 2-year
landscape establishment period**



An aerial photograph showing a large-scale water transfer system. A prominent, dark, winding canal or reservoir system is visible, snaking across a dry, brown landscape. The system includes several large, interconnected basins and a central reservoir. The surrounding area is a mix of agricultural fields, some green and some brown, and residential or commercial developments. The overall scene illustrates the infrastructure used to move water from one location to another in an arid region.

4. Design and Build an Efficient and Flexible Water Transfer System

Move water from where it is located to where it is needed.

25-Year Resilience Plan:

- Change funding priorities
- Change the north-south dialogue
- Imported water will continue to be needed but as a secondary source
- MWD can continue to be a wholesaler even if all water is not imported
- Promote BAT in emerging water technologies such as ocean desalination

Why can't the Santa Ana Watershed be where the plan begins?

